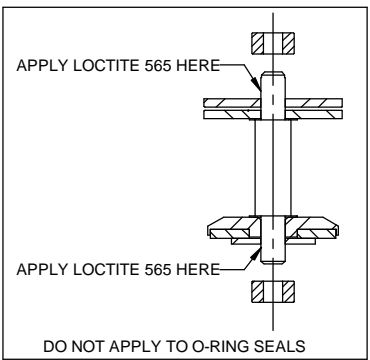
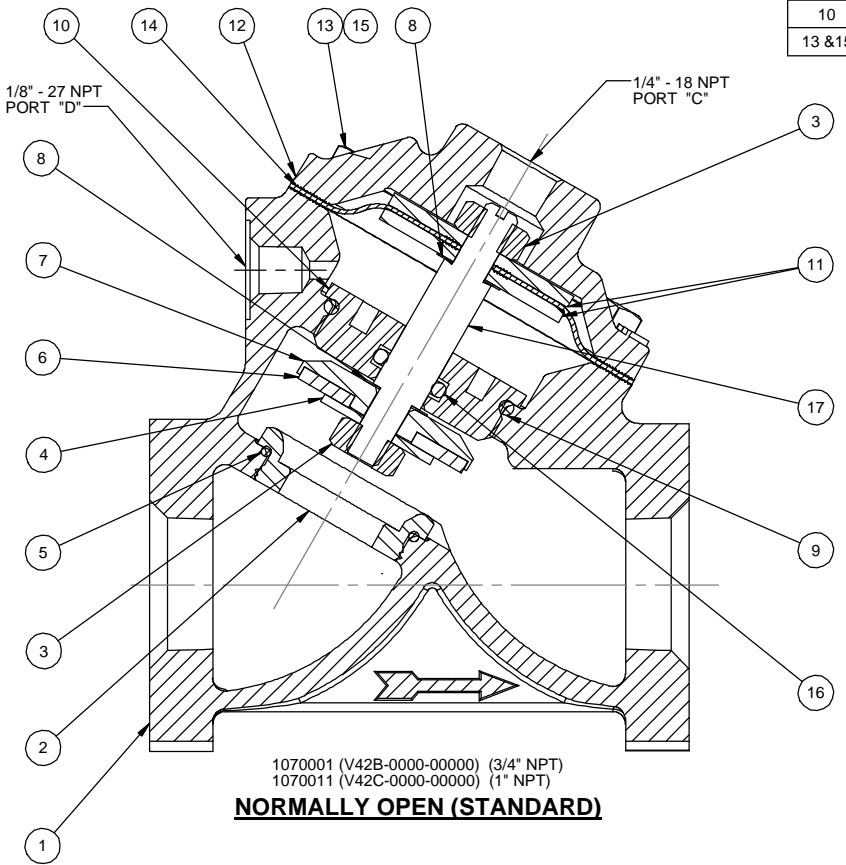


REPAIR PARTS KITS			
DESCRIPTION	PART NO.		
DIAPHRAGM & SEALS KIT CONSIST OF ITEM NO'S 3(2), 5, 6, 8 (2), 9, 14, 16	1070068 (421-RA)	1070081 (421-RAE)	1070093 (421-RAV)
	BUNA N INCLUDES DIAPHRAGM 1074119 (421-FB)	E.P.D.M. INCLUDES DIAPHRAGM 1074119 (421-FB)	FKM INCLUDES DIAPHRAGM 1074120 (421-FV)
	INT. PARTS KIT (NORM. OPEN) CONSIST OF STANDARD ITEM NO'S 4, 7, 10, 11(2), 17		
SEAT (ITEM NO. 2)	1074158 (421-MO)		

ASSEMBLY TOOLS	
DESCRIPTION	PART NO.
FOR INSTALLATION AND REMOVAL OF SEAT (ITEM #2) (TOOL NOT SHOWN)	1074161 (421-MT)
FOR INSTALLATION AND REMOVAL OF SHAFT GUIDE (ITEM #10) (TOOL NOT SHOWN)	1074124 (421-GT)

TORQUE TABLE		
ITEM #	DESCRIPTION	TORQUED TO (+/- 10%)
2	SEAT	120 IN/LBS
3	UPPER NUT	90 IN/LBS
3	LOWER NUT	90 IN/LBS
10	GUIDE, SHAFT	120 IN/LBS
13 & 15	NUT, & CAP SCREW	140 IN/LBS



REVISIONS					
ZONE	ECN	REV.	DESCRIPTION	DATE	APP'D
	30204	L	REDAWN IN SOLIDWORKS. 1078608 WAS 1074175; RENAMED DRAWING TO 1077613	30AUG10	MHM
	32614	M	UPDATED FOR NEW CAP DESIGN	10-03-11	TMS
	102895	N	1-1074149 WAS-1074147, 2-1074128 WAS-1074126, 3-1074122 WAS-1074123, 4-1074117 WAS-1074118, 5-43032 WAS-43727	18DEC13	TJM
	104393	P	1-ITEM#11 WAS: 1074118	19MAR15	TJM
	104665	R	1-ADD'D: TORQUE TABLES, 2-UPDATED TITLE BLOCK	29MAY15	TJM

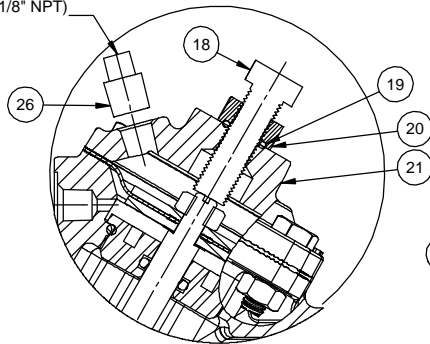
NO.	DESCRIPTION	STD	PART NO.	QTY.	
1	BODY	CAST IRON	3/4" NPT	1074085 (421-A3)	1
			1" NPT	1074088 (421-A4)	
		CAST BRASS	3/4" NPT	1074077 (421-AB3)	
			1" NPT	1074080 (421-AB4)	
2	SEAT - BRASS (REQ'S ASSY TOOL)	*	1074158 (421-MO)	1	
3	HEX NUT (1/4-28)	*	1263852	2	
4	DISC PLATE - SS	*	1074149	1	
5	O-RING	BUNA N	1071676 (ORB-024)	1	
		E.P.D.M.	1071721 (ORE-024)		
		FKM	1071791 (ORV-024)		
6	DISC	BUNA	1074140 (421-J)	1	
		E.P.D.M.	1074143 (421-JE)		
		FKM	1074146 (421-JV)		
		HYCAR	1074144 (421-JH)		
7	DISC HOLDER - SS	*	1074128	1	
8	GASKET - COPPER	*	1073948 (200-GG)	2	
9	O-RING	BUNA N	1071693 (ORB-125)	1	
		E.P.D.M.	1071732 (ORE-125)		
		FKM	1071803 (ORV-125)		
10	SHAFT GUIDE - SS (REQ'S ASSY TOOL)	*	1074123	1	
11	DIAPHRAGM PLATE - SS	*	43942	2	
12	CAP	CAST IRON	1074093 (421-C)	1	
		CAST BRASS	1074096 (421-CB)		
13	HEX SCREW	PLATED STEEL	1072398 (SCZ-0004)	4	
14	DIAPHRAGM	BUNA N	1074119	1	
		FKM	1074120		
15	HEX NUT	PLATED STEEL	1071656 (NUZ-0008)	4	
		BUNA N	1071689 (ORB-110TC)		
		E.P.D.M.	1071726 (ORE-110TC)		
16	O-RING	FKM	1239021 (ORV-110)	1	
17	SHAFT (NORMALLY OPEN)	*	1074150 (421-L)	1	

NOTES:
 1. AMERICAN NATIONAL STANDARD TAPER PIPE THREADS (NPT) PER ANSI B2.1-1968
 2. VALVES AVAILABLE WITH B.S.P.T. END CONNECTIONS.

SEE REVERSE SIDE FOR CONFIGURATION OPTIONS

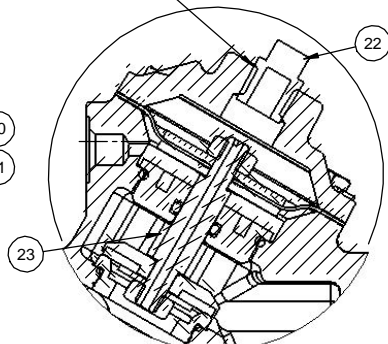
© 2016 AQ Matic Valve and Controls Company, Inc. All rights reserved. 16605 West Victor Rd New Berlin, WI 53151 262-326-0100 www.aq-matic.com		THIRD ANGLE PROJECTION		
APPROVALS	DATE	TITLE		
DRAWN		CATALOG SHEET, 421		
APPROVED		DIAPHRAGM VALVE STANDARD MODEL		
CHECKED		SIZE	DWG NO.	REV
		C	1077613	R
		SCALE	SHEET 1 OF 2	
		1:1		

USED WITH NORMALLY CLOSED VALVES ONLY (1/8" NPT)



1072563 (V42B-0010-00000) (3/4" NPT)
1070015 (V42C-0010-00000) (1" NPT)
LIMIT STOP

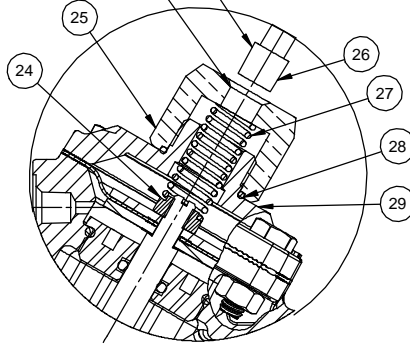
(1/4" NPT)



1070002 (V42B-0030-00000) (3/4" NPT)
1070012 (V42C-0030-00000) (1" NPT)
NORMALLY CLOSED

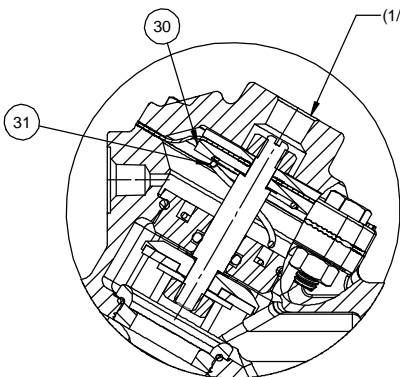
(1/8" NPT)

USED WITH NORMALLY CLOSED VALVES ONLY



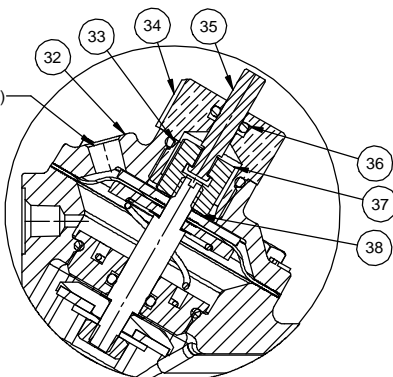
1070003 (V42B-0002-00000) (3/4" NPT)
1070013 (V42C-0002-00000) (1" NPT)
SPRING ASSIST CLOSED

(1/4" NPT)



1070004 (V42B-0001-00000) (3/4" NPT)
1070014 (V42C-0001-00000) (1" NPT)
SPRING ASSIST OPEN

(1/8" NPT)



1077144 (V42B-0021-00000) (3/4" NPT)
1072648 (V42C-0021-00000) (1" NPT)
POSITION INDICATOR

REPAIR PARTS KITS

DESCRIPTION	PART NO.
INT. PARTS KIT (LIMIT STOP) CONSISTS OF STANDARD ITEM NO'S 18, 19, 20	1074154 (421-LS)
INT. PARTS KIT (NORM. CLOSED) CONSISTS OF STANDARD ITEM NO'S 4, 7, 10, 11(2), 23	1070129 (421-RG)
INT. PARTS KIT (SPRING ASSIST CLOSED) CONSISTS OF STANDARD ITEM NO'S 24, 27, 28	1074176 (421-SC)
INT. PARTS KIT (SPRING ASSIST OPEN) CONSISTS OF STANDARD ITEM NO'S 4, 8, 31	1074178 (421-SO)
INT. PARTS KIT (POSITION INDICATOR) CONSISTS OF STANDARD ITEM NO'S 33 THRU 38	1074162 (421-PI)

CONVERSION KITS

DESCRIPTION	PART NO.
CONVERSION KIT (LIMIT STOP) CONSISTS OF STANDARD ITEM NO'S 18 THRU 21	1074155 (421-LSC)
CONVERSION KIT (SPRING ASSIST CLOSED) CONSISTS OF STANDARD ITEM NO'S 24 THRU 29	1074147 (421-SCC)
CONVERSION KIT (SPRING ASSIST OPEN) CONSISTS OF STANDARD ITEM NO'S 4, 8, 10, 31	1074179 (421-SOC)
CONVERSION KIT (POSITION INDICATOR) CONSISTS OF STANDARD ITEM NO'S 32 THRU 38	1074163 (421-PIC)

TORQUE TABLE

ITEM #	DESCRIPTION	TORQUED TO (+/- 10%)
20	NUT, LIMIT STOP	90 IN/LBS
24	CENTERING NUT	90 IN/LBS
25	NUT, SPRG RETAINER	120 IN/LBS
34	PI ROD GUIDE	120 IN/LBS
37	NUT, TOP, 428, PI	90 IN/LBS

REVISIONS

ZONE	ECN	REV.	DESCRIPTION	DATE	APP'D
			SEE SHEET ONE FOR LIST OF CHANGES		

LIMIT STOP MODEL

NO	DESCRIPTION	STD	PART NO.	QTY.
18	SCREW	*	1072361 (SCS-0030)	1
19	O-RING	*	1071668 (ORB-012)	1
20	HEX NUT	*	1077534 (400-H)	1
21	CAP	CAST IRON	* 1074101 (421-CCC)	1
		CAST BRASS	1074104 (421-CCCB)	

NORMALLY CLOSED MODEL

22	PIPE PLUG (1/4" NPT)	PLATED STEEL	* 1071918 (PLZ-0008)	1
		BRASS	1071904 (PLB-0009)	
23	SHAFT (NORMALLY CLOSED)	*	1074153 (421-LL)	1

SPRING ASSIST CLOSED MODEL

24	CENTERING NUT	*	1074185 (421-X)	1
25	RETAINER NUT - BRASS	*	1074183 (421-TT)	1
26	PIPE PLUG (1/8" NPT)	PLATED STEEL	* 1071917 (PLZ-0005)	1
		BRASS	1071903 (PLB-0007)	
27	SPRING	*	1078602	1
28	O-RING	*	1071674 (ORB-020)	1
29	CAP	CAST IRON	* 1074099 (421-CC)	1
		CAST BRASS	1074100 (421-CCB)	

SPRING ASSIST OPEN MODEL

30	DIAPHRAGM PLATE, 421, SAO	*	43727	1
31	SPRING	*	1078608	1

POSITION INDICATOR MODEL

32	CAP	CAST IRON	* 1074107 (421-CF)	1
		CAST BRASS	* 1074110 (421-CFB)	
33	O-RING	*	1071692 (ORB-116)	1
34	SHAFT GUIDE BUSHING	*	1074121 (421-GF)	1
35	INDICATOR SHAFT	*	1074164 (421-PM)	1
36	O-RING	*	1071688 (ORB-108TC)	1
37	TOP NUT	*	1074182 (421-TB)	1
38	LOCKWASHER	*	1073589 (WAS-0006)	1

NOTES:

- SPRING ASSIST CLOSED MODEL CANNOT BE COMBINED WITH LIMIT STOP MODEL.
- VALVES AVAILABLE WITH B.S.P.T END CONNECTIONS.

SEE REVERSE SIDE FOR STANDARD NORMALLY OPEN MODEL

<small>© 2016 AQ Matic Valve and Controls Company, Inc. All rights reserved. 16605 West Victor Rd New Berlin, WI 53151 262-326-0100 www.aq-matic.com</small>		<small>THIRD ANGLE PROJECTION</small> 		
<small>DO NOT SCALE DRAWING. DIMS. ARE IN INCHES (mm) UNLESS OTHERWISE SPECIFIED. ALL FINISHED MACHINED SURFACES 125 √ OR BETTER. TOLERANCES: ANGLES: ± .015 (0.38) 1 PLACE XX: ± .01 (0.3) 2 PLACE XXX: ± .005 (0.13)</small>	<small>APPROVALS</small> <small>DRAWN</small> <small>APPROVED</small> <small>CHECKED</small>	<small>DATE</small> <small>REV</small> <small>R</small>	<small>TITLE</small> CATALOG SHEET, 421 DIAPHRAGM VALVE STANDARD MODEL	
		<small>SIZE</small> C	<small>DWG NO.</small> 1077613	<small>SCALE</small> 1:1
			<small>SHEET 2 OF 2</small>	